



WORLDWIDE ELECTRIC MOTOR DATA SHEET

FD5-18-184T



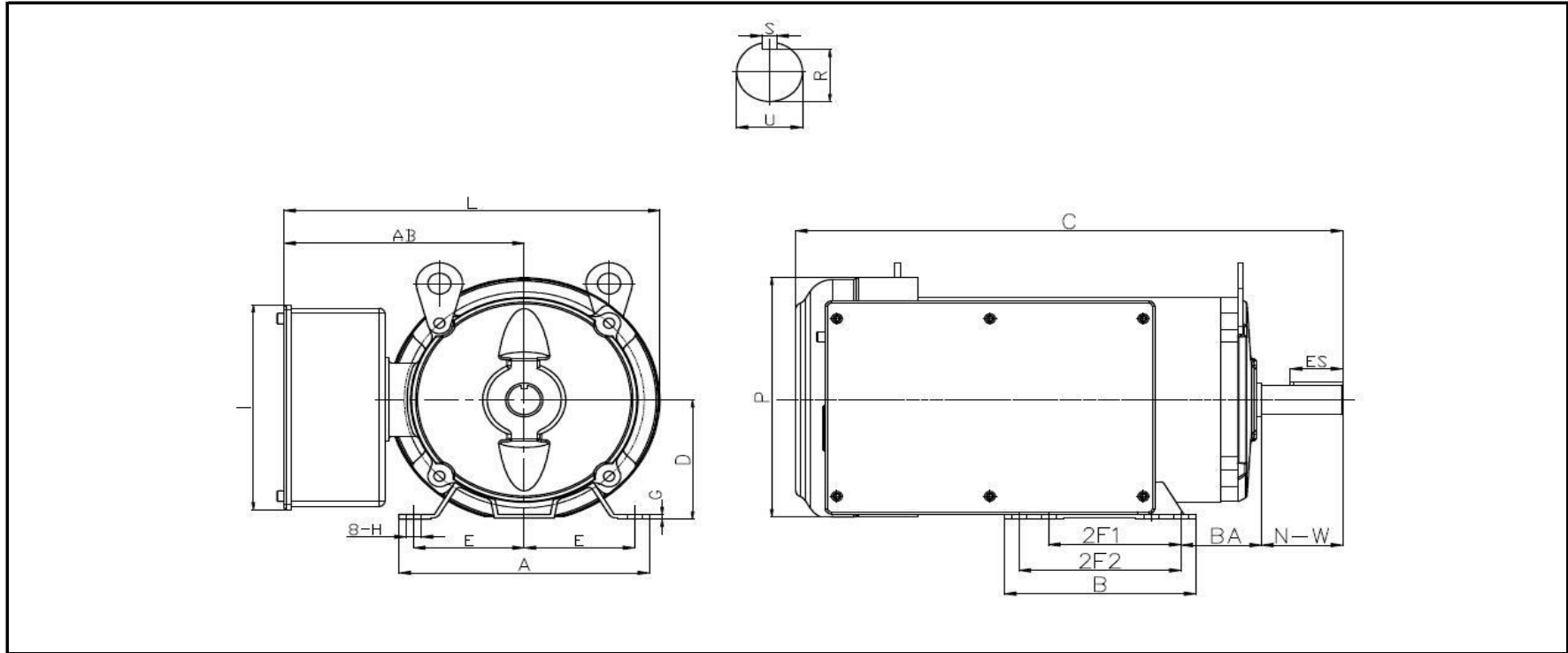
HORSEPOWER	5		
RPM / POLES	1800 / 4		
VOLTAGE / PHASE	208-230 V / 1		
FRAME	184T		
ENCLOSURE / DEGREE OF PROTECTION	TEFC / IP55		
FREQUENCY	60 HZ		
FULL LOAD SPEED	1769 RPM		
SERVICE FACTOR	1.15		
INSULATION CLASS	F		
FULL LOAD AMPS	20.2 A		
LOCKED ROTOR AMPS (STARTING)	170.7 A		
NO LOAD CURRENT	6.3 A		
NEMA CODE LETTER	J		
EFFICIENCY / POWER FACTOR	<u>LOAD</u>	<u>EFF.</u>	<u>P.F.</u>
	100%	86.4%	0.92
	75%	85.4%	0.91
	50%	81.0%	0.86
DUTY CYCLE	CONTINUOUS		
TORQUE	<u>FULL LOAD</u>	<u>LRT</u>	<u>BDT</u>
	14.7 lb.ft.	389%	390%
MAX. AMBIENT TEMPERATURE	40° C		
MAX. ELEVATION	3300 Ft. Above Sea Level		
TEMPERATURE RISE (At Full Load)	80° C		
BASE TYPE	Rigid Base		
CAPACITOR (START)	550uF / 300V		
CAPACITOR (RUN)	50uF / 450V		
DE BEARINS	6306ZZ		
ODE BEARING	6206ZZ		
REGREASING INT. - DE BEARING	---		
REGREASING INT. - ODE BEARING	---		
GREASE TYPE	Multemp SRL		
MOUNTING	F1		
ROTATION	Bi-Directional		
SHAFT MATERIAL	1045 Carbon Steel		
CONNECTION DIAGRAM	230 V - 4 Lead		
APPROXIMATE WEIGHT	101 lbs.		





WORLDWIDE ELECTRIC MOTOR DRAWING

FD-184T



DIMENSIONS - INCHES

MOUNTING									
E	2F1	2F2	H	BA	A	B	C	D	G
3.75	4.5	5.5	0.41	2.75	8.5	6.5	18.6	4.5	0.41

KEYSET	KEY							
R	ES	S	U	N-W	P	AB	I	L
0.986	1.78	0.25	1.125	2.75	9	8.2	7.7	12.8

REVISED - 03/06/18